

IAS in coastal dunes of Belgium

AGENTSCHAP
NATUUR & BOS

INSTITUUT
NATUUR- EN
BOSONDERZOEK

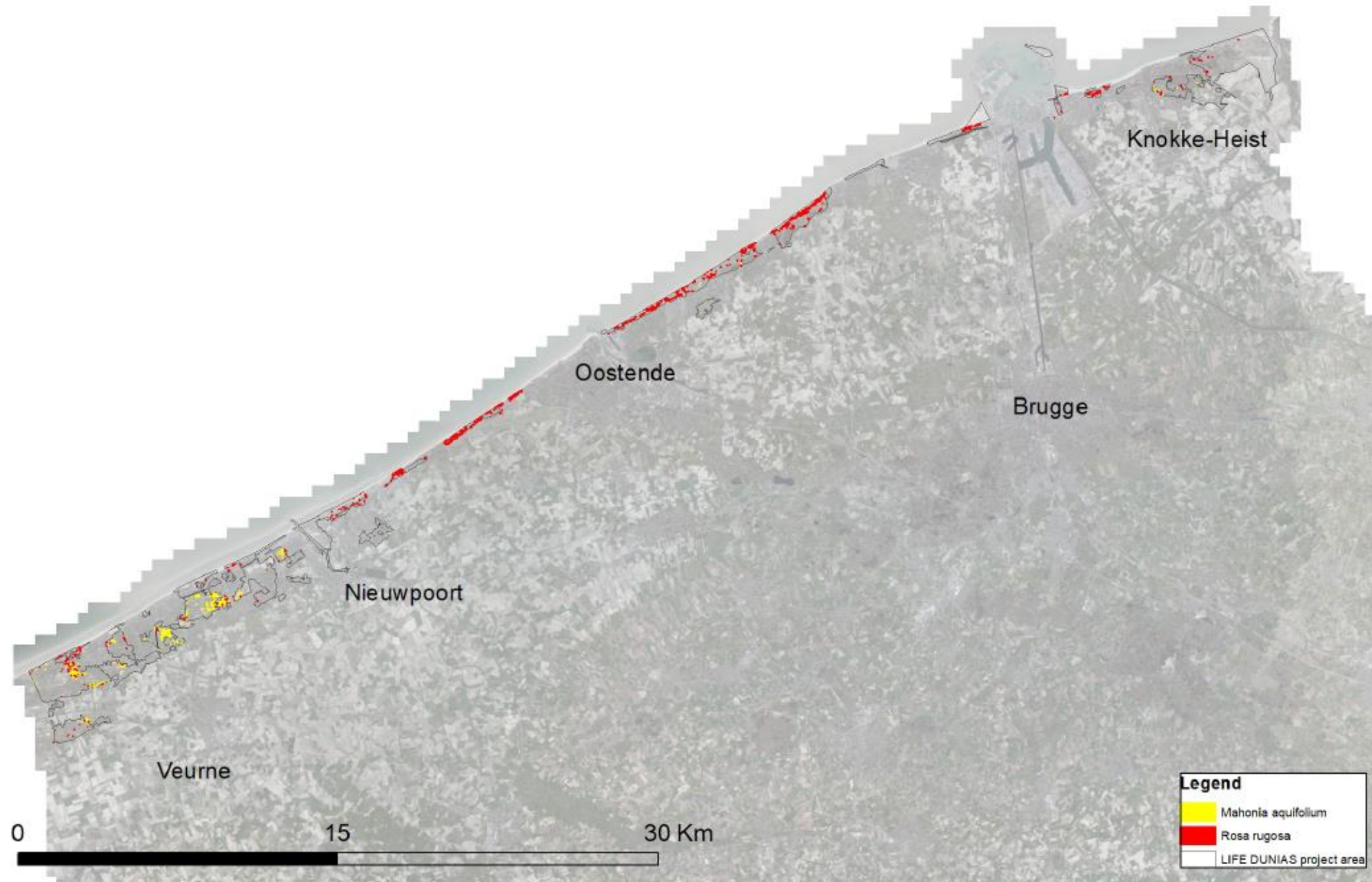


Distribution of most common IAS in the project area

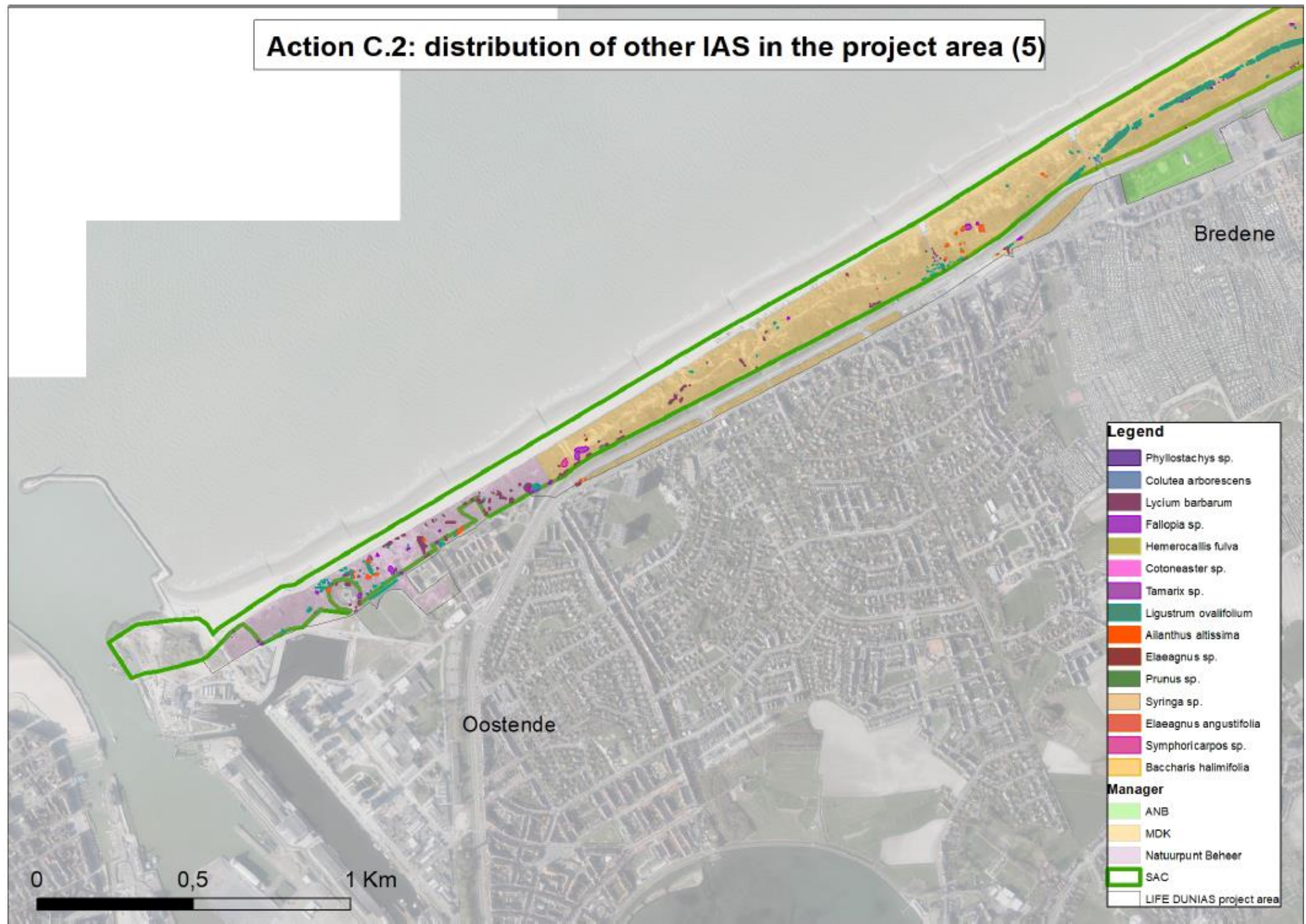


- Legend**
- Populus alba
 - Prunus serotina
 - Phyllostachys sp.
 - Cotula arborescens
 - Philadelphus sp.
 - Lycium barbarum
 - Fallopia sp.
 - Cornus sanguinea
 - Cotoneaster sp.
 - Euonymus japonicus
 - Tamarix sp.
 - Ribes aureum
 - Ligustrum ovalifolium
 - Ailanthus altissima
 - Fallopia japonica
 - Hedera sp.
 - Gaillardia sp.
 - Prunus laurocerasus
 - Sorbaria sorbifolia
 - Lonicera sp.
 - Mahonia aquifolium
 - Elaeagnus sp.
 - Populus sp.
 - Prunus sp.
 - Rosa rugosa
 - Robinia pseudoacacia
 - Ribes aureum
 - Centranthus ruber
 - Syringa sp.
 - Elaeagnus angustifolia
 - Symphoricarpos sp.
 - Quercus illex
 - Baccharis halimifolia
 - Crassula helmsii
 - Prunus mahaleb
 - Parthenocissus tricuspidata
 - Yucca sp.
 - LIFE DUNIAS project area

Action C.1: distribution of *R. rugosa* and *M. aquifolium* in the project area



Action C.2: distribution of other IAS in the project area (5)



Rosa rugosa







Mahonia aquifolium





Lycium barbarum







Prunus serotina



Ailanthus altissima



Baccharis halimifolia



Crassula helmsii



Elaeagnus sp.



Yucca sp.



Cotoneaster sp.



Less invasive in Belgium, but nevertheless exotic

Ligustrum ovalifolium



Tamarix sp.



Less invasive in Belgium, but nevertheless exotic

Ribes sp.



Symphoricarpos sp.



Not exotic, but nevertheless invasive in some cases

Maple



